

Wings to take you to heights







# YOUR SEARCH FOR THE PERFECT HOME ENDS HERE

Premium Villa & Villaments in a most contemporary style,  
with spacious 4 / 3 / 2 BHK homes just 4 Kms. away from Kannur International Airport.





Now distance can't keep you away from your loved ones.



When Malabar's wings are spreading open with the new Kannur International Airport, just 4 Kms. away, **Hi-Rise 'Wings'** Residency a premium housing project comprising 25 independent villas and 24 (2BHK) Villaments offer a once in a life time choice of owning a beautiful & luxurious home in a quiet neighborhood, close to both town and airport. Secure your future now with a home in the complex. In the coming years you will be proud of your decision.





Surround yourself with serenity & inner peace



Unique eco friendly features & green concepts  
that ensure a healthy & happy life.



Finely crafted majestic villas



Spacious 4/3 BHK villas with all modern home concepts incorporated into the artistic designs.



They are much more than homes



They give your family clean, unpolluted surroundings  
that ensure healthy living to grow & prosper.



## Statuesque structure



24 Villaments in four structures in three stories with intelligently distributed space, befitting an urban life style.



A most urban lifestyle in a rustic ambience







**Hi Rise 'wings'** residency combines luxurious splendor and unobtrusive privacy. There are 49 homes in the three acre walled community, with a natural brook flowing through one side. Each villa situates in 6-8 cents of land, with 1883 to 2454 sq ft plinth area. Four blocks of three storied structures comprise 24 spacious villaments. All modern amenities such as club house, swimming pool, indoor game courts, children's play park, Health club, jogging track, badminton court etc. are provided at the complex. Abundant ground water round the year ensures problem free life. **Hi Rise 'wings'** is situated at a quiet residential area, yet every modern day essentials like schools, markets, religious worship centers, hospital etc. are in close proximity.



The future is here. Welcome



Relax, unwind and discover true 'future life' at Hi Rise 'Wings' Residency





# Specifications

## STRUCTURE

- a) For Villas Load bearing with late rite/Concrete Block Masonry Plastered smooth and putty finish with premium quality emulsion paint for interiors and weather shield emulsion paint for exteriors.
- b) For villament Frame Structure with late rite masonry wall plastered smooth and putty finish with premium quality emulsion paint for interiors, paint for exteriors

## PARKING/GARAGE

Covered Space for one car for each villa/ basement car parking for villament.

## BEDROOMS / FORMAL LIVING/DINING / COURTYARD

Branded natural / engineered stone / vitrified flooring and skirting as per approved sample.

## TOILETS

- a) Sanitary ware of ROCA & QUEO or equivalent
- b) CP Fitting of GROHE or equivalent with concealed mixer diverters.
- b) Branded floor and wall tiling (up to ceiling as per architect design
- c) Provision for geyser and exhaust fan
- d) Branded toilet accessories.

## KITCHEN / KITCHEN STORE / WORK AREA

- a) Branded natural / engineered stone/vitrified flooring and skirting as per approved sample.
- b) Adequate Plumbing and electrical points.

## BALCONY / FIRST FLOOR ,TERRACE / PASSAGE

- a) Branded ceramic flooring as per approved sample
- b) Granite coping for parapet

## STAIRCASE

- a) Branded natural/vitrified tile for thread and rise
- b) M.S handrail as per design

## DOORS AND WINDOWS

Main Doors

- a) Frame – Timber, b) Shutters – wooden door, Bedroom Doors, Frame – Timber
- Shutter – Flush Door, Bathroom – Doors, Frame – Timber, Shutters – Flush Door

## WINDOWS / Ventilators

Heavy duty aluminum sliding windows and louvered ventilators

## ELECTRIFICATION AND CABLING

- a) Concealed copper wiring with adequate plug points for entire villas.
- b) Provision of telephone, TV & A C points in living room and bed rooms
- c) Modular switches of LEGRAND or Equivalent .
- d) Master control switches for external villa lighting
- e) Intercom facility with each Villa & Villament.

## LANDSCAPE

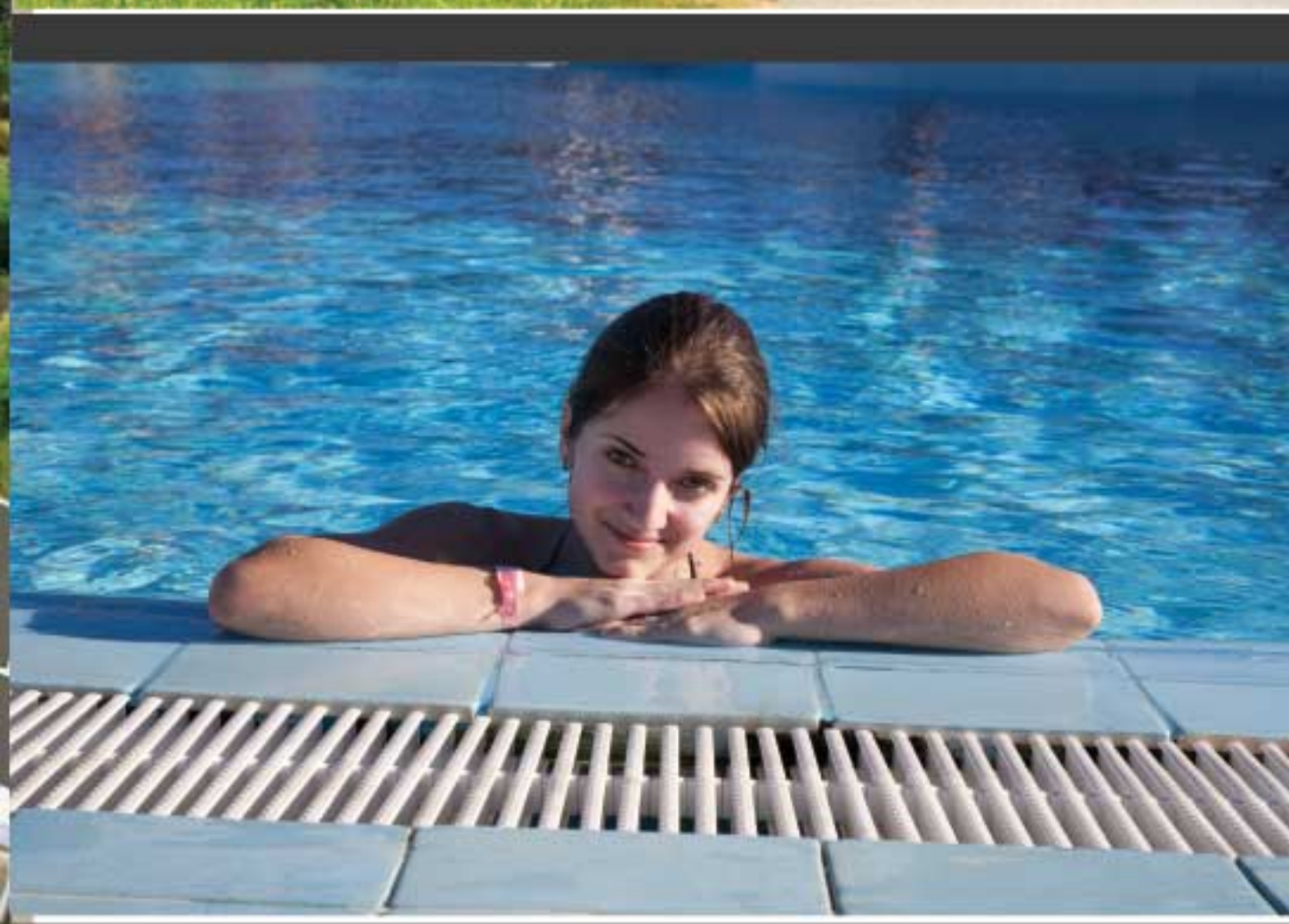
Design landscaping



Everything to make you feel good and safe.







Every feature at **Hi-Rise 'Wings'** Residency is aimed to guarantee fine living in the highest of fashions.

## ACTIVITIES

- a) Club House
- b) Health club
- c) Swimming pool
- d) Table Tennis
- e) Outdoor Badminton Court
- f) Jogging track
- g) Mini Basket Ball Ring
- h) Childrens Play Area

## ADDED VALUE

- a) 5mtrs wide internal road
- b) Common Well and Water connection from water authorities
- c) 3 Phase Electrical provision for all Villas & Villaments
- d) Secured gated community
- e) Intercom connection for each villas & villaments.

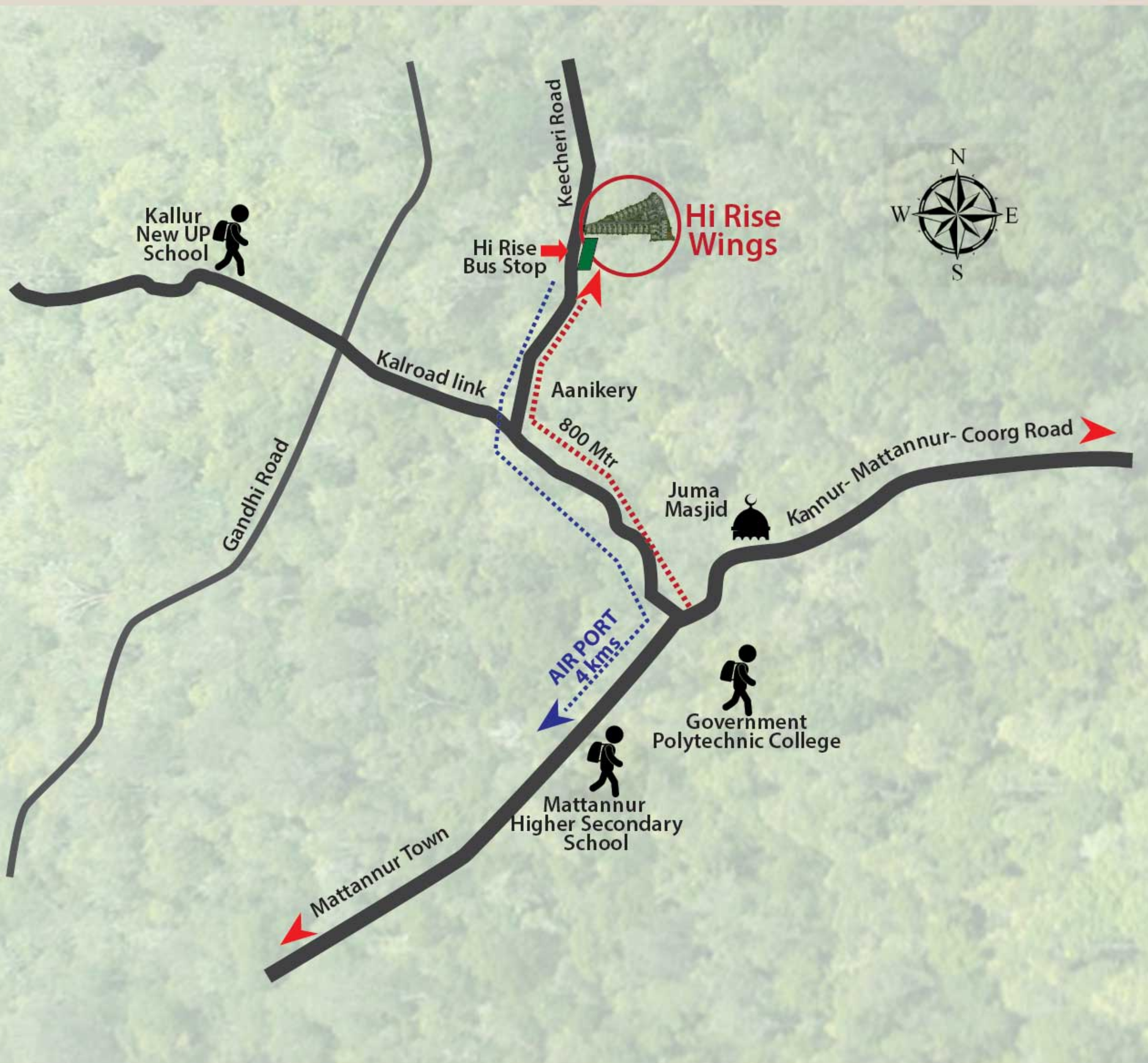
## GO GREEN

- a) Environment friendly, Rainwater harvesting and ground water recharge
- b) Optional solar paneling in each villas
- c) LED Lights to save energy
- d) Garbage management systems
- e) Green Construction Pratices.





# LOCATION MAP



## KEY DISTANCE

Airport	:	4km
Bus stand	:	2 km
Civil station	:	1 km
Higher Sec. school	:	2 km
College	:	3 km
Govt Poly technic	:	1 KM
Rly station thalassery	:	26 km
Coorg	:	26 km
Mysore	:	120 km
Juma masjid	:	1 km
Kottiyur temple	:	5 km
Koothuparamba	:	14 km
Pazhassi Rajah-NSS College	:	1.8 km



# SITE LAYOUT PLAN

PLOT NO.	1	2	3	4	5	6	7	8	9	10	11	12	13	14
AREA IN CENT	6.25	5.89	6.27	6.27	6.27	6.27	6.27	6.27	6.27	6.27	6.27	6.27	6.95	6.18
PLOT NO.	15	16	17	18	19	20	21	22	23	24	25	26	27	28
AREA IN CENT	8.52	5.70	5.70	6.20	5.78	5.86	5.81	5.75	5.69	5.63	5.40	21.21	12.82	11.65





FLOOR PLAN

VILLA FLOOR PLAN - A ( 1 to 17)



**GROUND FLOOR 4 BED ROOM**  
AREA DETAILS : 1248 Sqft



**FIRST FLOOR 4 BED ROOM**  
AREA DETAILS : 1206 Sqft

Total: 2454 Sq ft.

VILLA FLOOR PLAN - B (18 to 25)



**GROUND FLOOR 3 BED ROOM**  
AREA DETAILS : 1064 Sqft



**FIRST FLOOR 3 BED ROOM**  
AREA DETAILS : 819 Sqft

Total: 1883 Sq ft.



## VILLAMENT FLOOR PLAN



**VILLAMENT PART 1**  
**2 Bedroom: 1184 Sq ft,**  
**VILLAMENT PART 2**  
**2 Bedroom : 1184 Sq ft**

## CLUB HOUSE FLOOR PLAN



**CLUB HOUSE GROUND FLOOR**  
**AREA DETAILS : 1460 Sqft**



**CLUB HOUSE FIRST FLOOR**  
**AREA DETAILS : 1398 Sqft**





Harmony of space and time.





COMPLETED PROJECT



**SEA BREEZE**  
Venus Corner, Thalassery

ONGOING PROJECT



**Waves**  
Hollow way road  
AN ISLAND OF LUXURY  
Thalassery

## Architects statements

The connectivity of Mattanur Airport to the modern cities of the world & the builder's passion to do a world class facility gave us an opportunity to explore with the most modern architecture by respecting the local ambience with ample greenery around.

Walking down the pathway of Hi-Rise Wings Residency one is bound to experience the continuous flow of green space which culminates to the beautiful flowing stream backed up by LED street lighting.

**tropics**  
ARCHITECTURE + INTERIORS

Ar. Bijoy



[www.hirisehome.com](http://www.hirisehome.com) Contact: +91 9633216141, 9605029999



Hi-Rise Builders-Developers, II nd floor, Kanak Complex,  
Kayyath Road , Thalassery - 670 101  
Tel: 0490 2341999, E mail: [info@hirisehome.com](mailto:info@hirisehome.com)

**Overseas:**

**Dubai**

Ph : +971 50 646 2891  
+971 55 646 2891  
Email : [fmkb786@eim.ae](mailto:fmkb786@eim.ae)

**New York (USA)**

Ph : +1 917 327 2191  
Email: [salim@hirisehome.com](mailto:salim@hirisehome.com)

**Bahrain**

Ph: +973 33 593 718

**Singapore**

Ph: +659 465 2376

Skype: Hirise Builders



*\*Dimensions may vary during construction / furniture and fixtures are indicative only / plans and areas are subject to minor changes / all dimensions are in Sq. ft.*